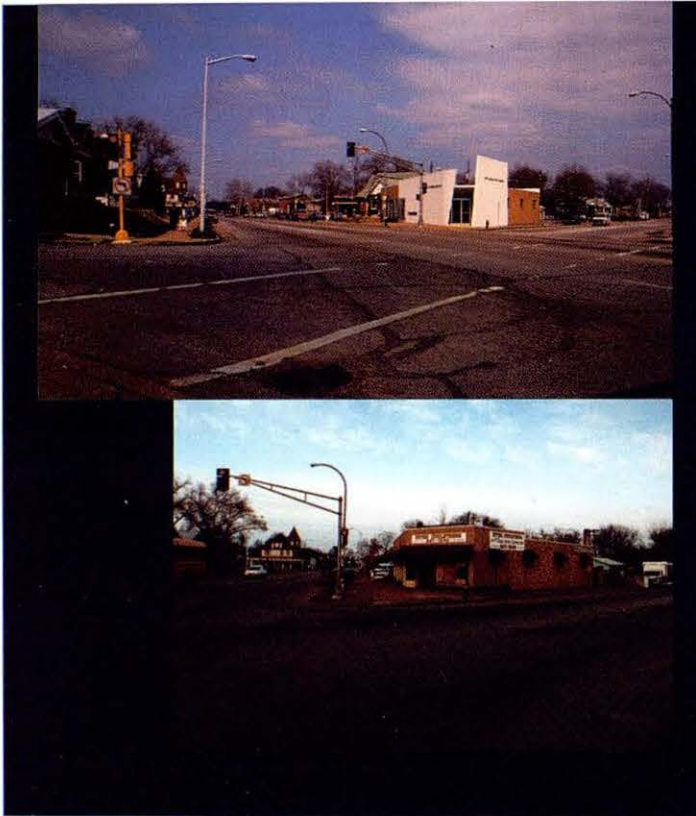


# 6th. church of Christ Scientist

Conversió d'un local en capella  
Conversion of a store building to chapel

Adrian Luchini  
Thomas Schwetye

---



Tanca les mans i no et moguis.

Resa,

o medita,

o estableix les circumstàncies

que delimiten el teu territori,

aïllant-te del món

momentàniament.

En altres paraules, prepara els

marges que et permeten de dir

"ara" i "aquí"...

Aquest projecte és

(precisament) un esforç per

fabricar un únic punt.

El que segueix és un eco blanc

del que t'és familiar: noms,

materials, codis, gravetat,

diners.

Close your hands and don't

move.

Pray,

or meditate,

or establish the

circumstances that mark

the limits of your

territory, momentarily

isolating you from the

world: arrange, in other

words, the margins

that allow you to say "here"

and "now"...

This project is (precisely)

an effort to fabricate a

single point. What follows

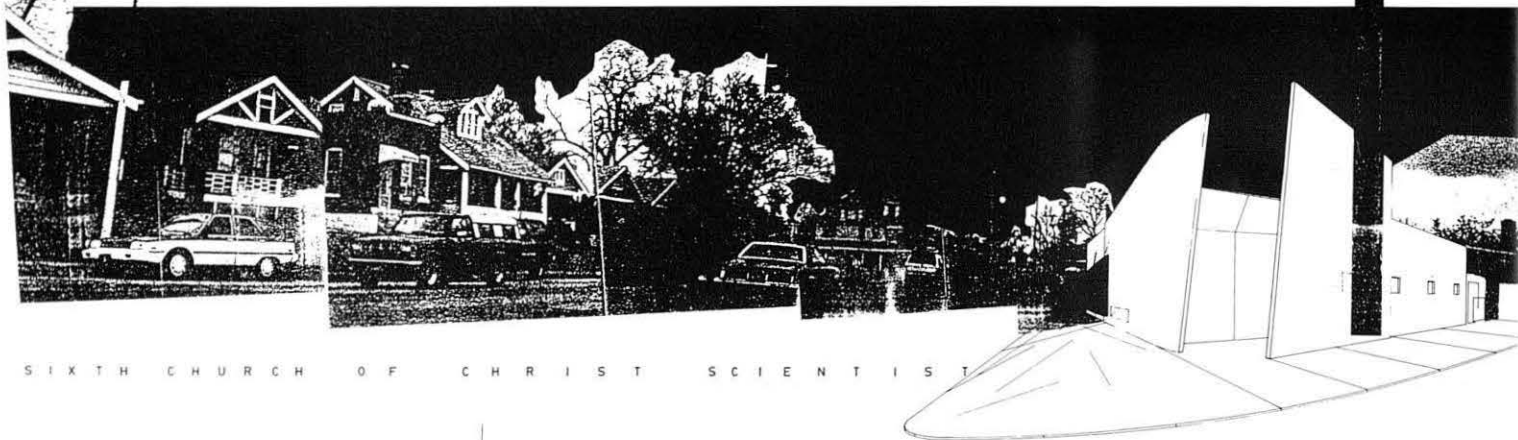
is a white echo made of the

familiar: names, materials,

code, gravity, money.



**Vista cap a l'entrada principal**  
Entrance view



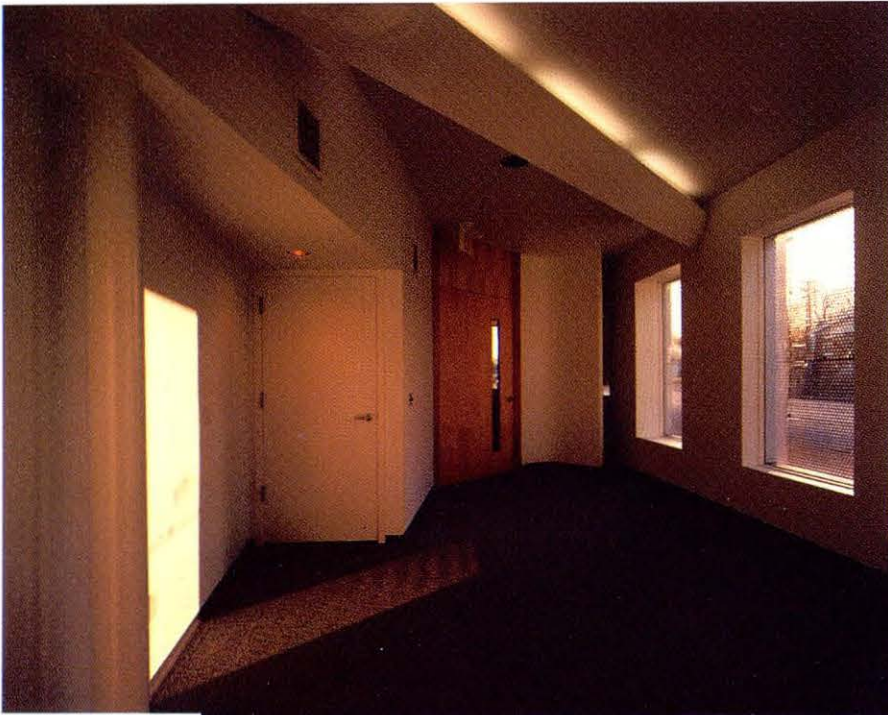
S I X T H C H U R C H O F C H R I S T S C I E N T I S T

**Vista cap al sud**  
View of the South



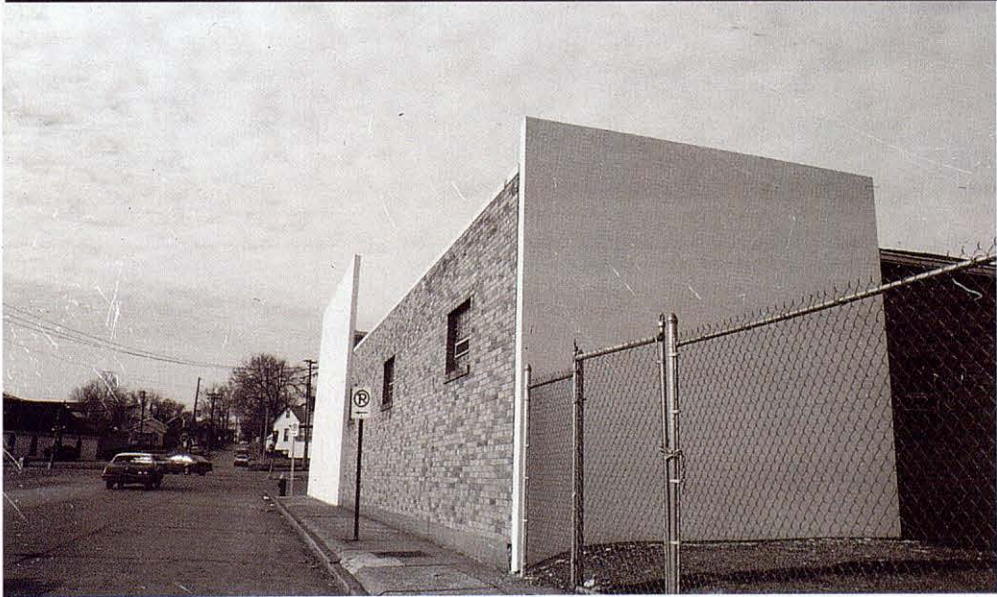
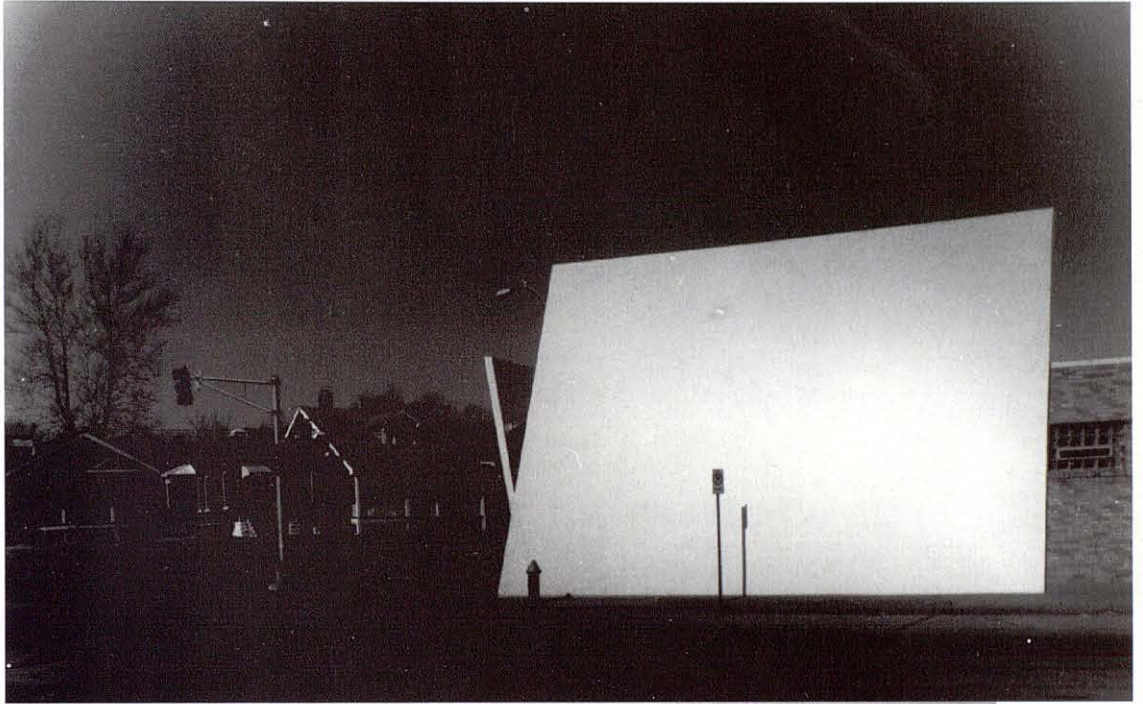






**Interiors de la sala de lectura,  
de l'auditori i de l'aparador de llibres**  
Views of the reading room, the auditorium  
and the display window

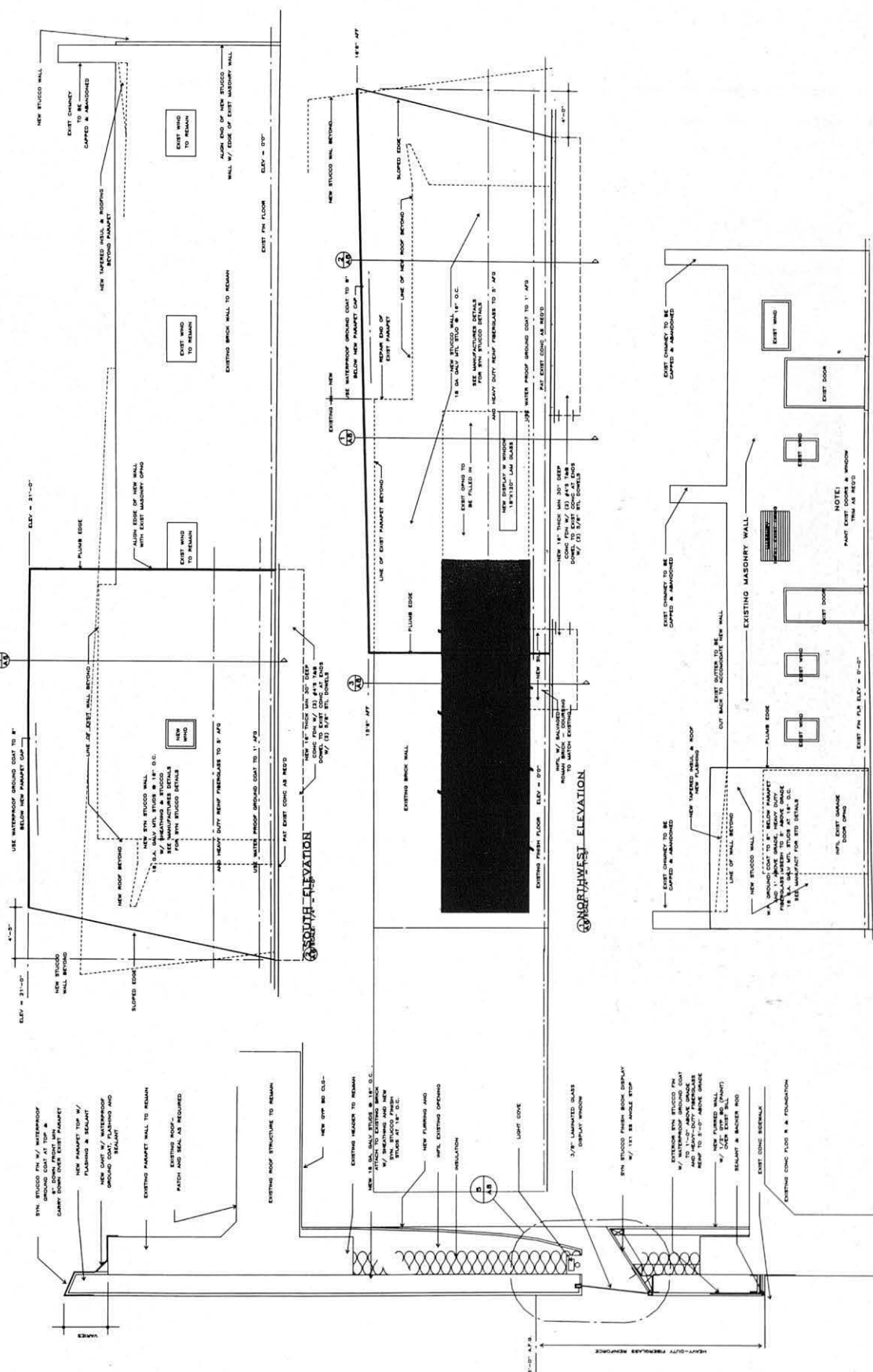
**Vistes de la façana sud**  
Views of the south façade







Sections constructives i alcats. Wall sections and elevations



1 WALL SECTION  
SCALE 1/4" = 1'-0"

WEST ELEVATION

NORTHWEST ELEVATION

SOUTH ELEVATION